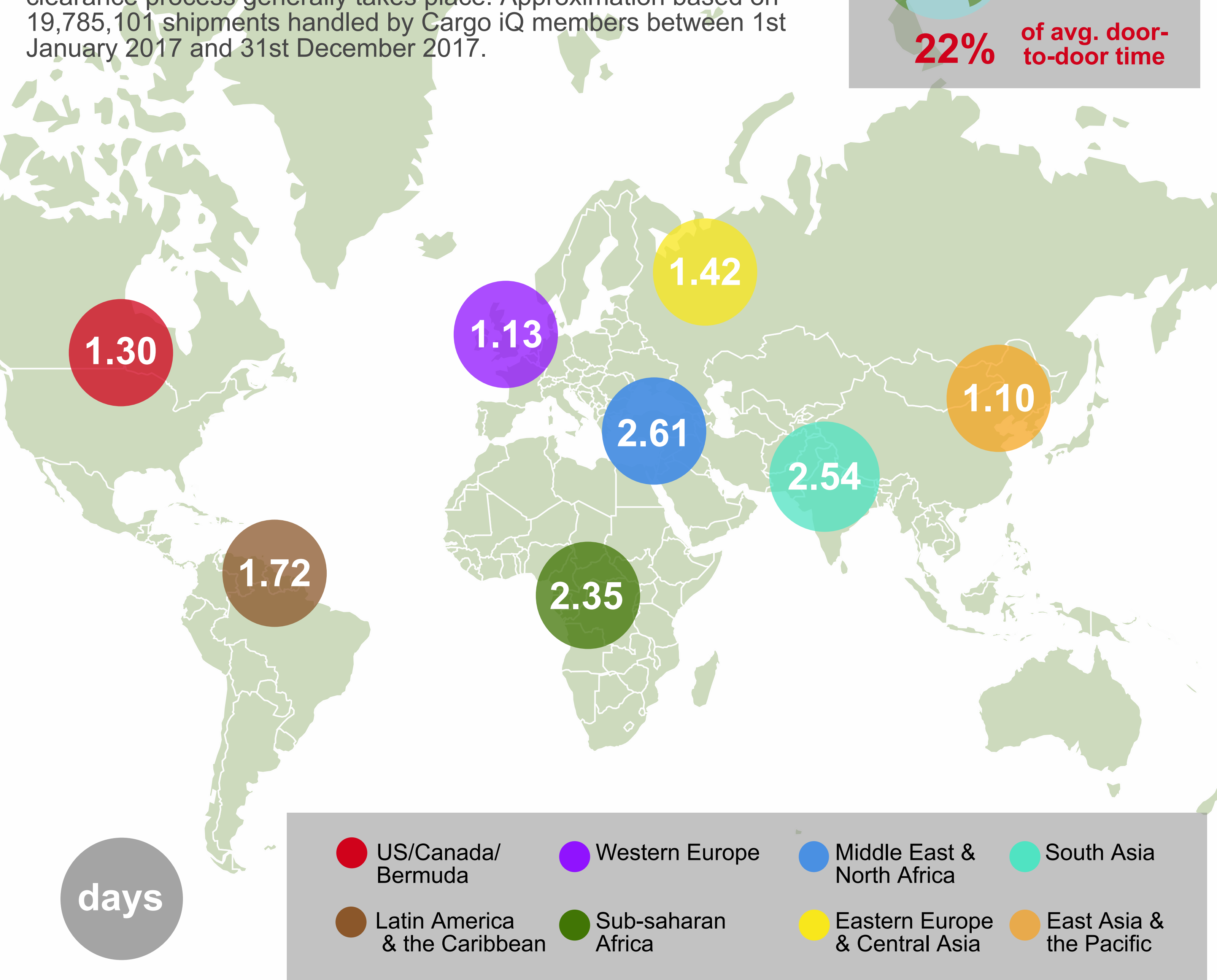


AIR CARGO BORDER EFFICIENCY 2017

The graph shows average days for the clearance of air cargo in international borders, measured from arrival of the cargo by air at destination until the handover of the cargo to the consignee, period in which the custom clearance process generally takes place. Approximation based on 19,785,101 shipments handled by Cargo iQ members between 1st January 2017 and 31st December 2017.

GLOBAL AVERAGE
1.41 days
22% of avg. door-to-door time



days

US/Canada/Bermuda	Western Europe	Middle East & North Africa	South Asia
Latin America & the Caribbean	Sub-saharan Africa	Eastern Europe & Central Asia	East Asia & the Pacific